

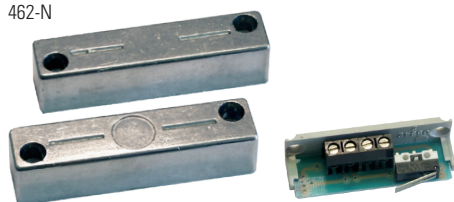
EN50131-2-6 GR2 CL IV

- Complies with EN50131-2-6
- Wall mounting
- Die-cast aluminium housing
- Long operation distance
- Suitable for doors and windows of any material
- Simplified installation

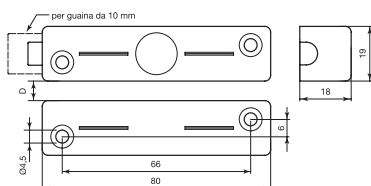
Series 460 N

Housing material	Die-cast aluminium
Operation	Reed contact with NC output with near magnet or changeover reed contact
Type of connection	Wires or terminals (2 for contact - 3 for changeover contact + 2 for anti-tampering)
Operating temperature	Mod.460-N and 460-NS: -25°C to +60°C Mod.462-N and 462-NS: -25°C to +50°C
Protection rating	IP 34 IP 65 (only for version with wire connection)
Standard equipment	Tamper-proof caps, cable gland, anti-tampering wires

462-N



Dimensions



Order codes

Code	D max (no iron)	D max (on iron)	Connection type	Max voltage	Max current	Max power	N° wires	Cable length	Safety grade	Environmental class	Package weight
460-N	20 mm	15 mm	NC*	42.4 Vpeak - 60 V DC	1 A	10 W	4	1.2 m	2	IV	0.30 Kg
460-NS	15 mm	10 mm	changeover	42.4 Vpeak - 60 V DC	300 mA	3 W	5	1.2 m	2	IV	0.30 Kg
462-N	30 mm	25 mm	NC*	42.4 Vpeak - 60 V DC	1 A	10 W	4 terminals	-	2	III	0.25 Kg
462-NS	15 mm	10 mm	changeover	42.4 Vpeak - 60 V DC	300 mA	3 W	5 terminals	-	2	III	0.25 Kg

Safety grade and *Environmental Class* as per European Standard EN 50131-1

D max: maximum installation distance For other operating distances, see the instructions sheet at www.coopercsa.it

* With near magnet

Accessories

460-NDIST	Plastic spacer for 460 N eries
AG-10	Black PVC-coated steel sheath - 10 m

Series 460 N

Aluminium magnetic contact for surface mounting.

It is the new version of contact series 460, with the following enhancements: renewed aesthetics, fixing symmetry, extremely simplified installation for the version with terminal connection thanks to the circuit's snap mounting. Thanks to its solid die-cast aluminium structure, it is suitable for applications in factories, shopping malls, etc. Its long operating distance allows the use on frames of any material and with large play.

Available with wire and terminal connection.

The version with wire connection has a reed section that contains a tightly sealed reed with polyurethane resin and an anti-tampering loop to reduce any risk of intrusion.

The version with terminal connection is provided with protection against "pull" and a printed circuit board that can house eventual balancing resistors. Arranged to be protected with a Ø 10 mm PVC coated steel cable sheath (not included).