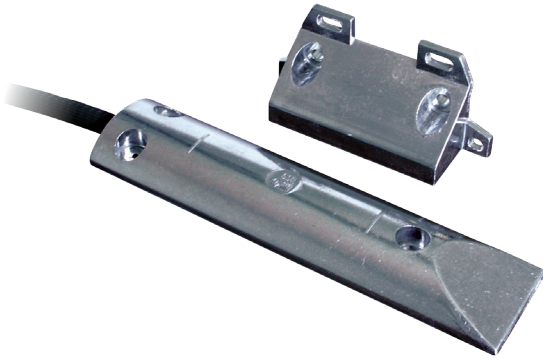


# 1.4

## Surface-mounting magnetic contacts

Series 450

1



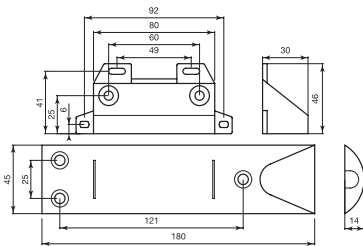
EN50131-2-6 GR2 CL III

- Complies with EN50131-2-6
- Floor mounting
- Die-cast aluminium housing
- Wire connection
- With anti-tampering wire loop
- Steel sheath

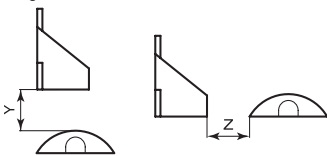
### Series 450

|                       |  |
|-----------------------|--|
| Housing material      | Die-cast aluminium   |
| Operation             | Reed contact with NC output with near magnet   |
| Type of connection    | Wires (2 for contact + 2 for anti-tampering)   |
| Operating temperature | -25°C to +50°C   |
| Protection rating     | IP 65  |
| Standard equipment    | Protective 10 mm diameter cable sheath, 1 metre long in steel with black PVC coating; anti-tampering wires |

### Dimensions



### Diagram of Y and Z distances



### Order codes

| Code      | Y max/Z max (no iron) | Y max (on iron) | Max voltage                      | Max current | Max power | N° wires | Cable length | Other certifications | Safety grade | Environmental class | Package weight |
|-----------|-----------------------|-----------------|----------------------------------|-------------|-----------|----------|--------------|----------------------|--------------|---------------------|----------------|
| 450-CSA   | 50/52 mm              | 28 mm           | 42.4 V <sub>peak</sub> - 60 V DC | 1 A         | 10 W      | 4        | 1.2 m        | Vds G191589 Cl.B     | 2            | III                 | 0.24 Kg        |
| 450-FR    | 35/25 mm              | 20 mm           | 42.4 V <sub>peak</sub> - 60 V DC | 1 A         | 10 W      | 4        | 1.2 m        | NF A2P GR2+RTC       | -            | -                   | 0.19 Kg        |
| 450-TF-2  | 50/52 mm              | 28 mm           | 42.4 V <sub>peak</sub> - 60 V DC | 1 A         | 10 W      | 4        | 2.0 m        | -                    | 2            | III                 |                |
| 450-TFC-2 | 13-18/16 mm           | 16 mm           | 48 V                             | 300 mA      | 3 W       | 4        | 2.0 m        | Vds G198067 Cl.C     | -            | -                   | 0.19 Kg        |

"Safety grade" and "Environmental Class" as per European Standard EN 50131-1

Y max: maximum vertical installation distance; Z max: maximum horizontal installation distance (see diagram below).

For other operating distances, see the instructions sheet at [www.coopercsa.it](http://www.coopercsa.it)

### Accessories

|       |                                      |
|-------|--------------------------------------|
| AG-10 | Black PVC-coated steel sheath - 10 m |
|-------|--------------------------------------|

## Series 450

### Magnetic contact for garage doors

Aluminium magnetic contact for garage or sliding/folding doors. The strong housing construction of die-cast aluminium ensures maximum resistance to the wheels of heavy vehicles, fork-lift trucks etc., making it suitable for heavy-duty applications.

The reed part is fixed to the ground with three screws, while the magnet is mounted on the door (6 mounting holes available). The long operating distances also work perfectly where there is a large gap between doors. The reed section contains a tightly sealed reed with polyurethane resin and anti-tampering loop to reduce any risk of intrusion.

Connection uses 4 wires (2 wires for NC contact with near magnet and 2 wires for anti-tampering), protected by a steel sheath, and covered by black PVC.

Contact 450-TFC-2 is magnetically balanced to reduce the risk of intrusion by means of an external magnet.