

EN50131-2-6 GR2 CL III

- Complies with EN50131-2-6
- Surface mounting
- High mechanical resistance
- Wide operating distance
- Suitable for doors and windows of any material
- Wire connection
- With anti-tampering wire loop

Series 403 AG

Housing material	Metal alloy, aluminium colour
Operation	Reed contact with NC output with near magnet
Type of connection	Wires (2 for contact + 2 for anti-tampering)
Operating temperature	-25°C to +50°C
Protection rating	IP 65
Standard equipment	Anti-tampering wires

Series 403 AG

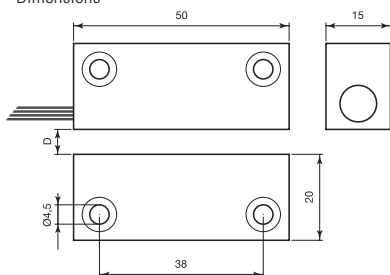
Metallic magnetic contact

Metal magnetic contact for surface mounting with high mechanical resistance.

It is suitable to be mounted on door/window frames of any material: aluminium, wood, PVC, iron etc., even with large tolerance or play thanks to the long operating distance.

The reed section contains a tightly sealed reed with polyurethane resin and anti-tampering loop to reduce any risk of intrusion. Connection uses 4 wires (2 wires for NC contact with near magnet and 2 wires for anti-tampering). It is fixed to the frame using screws.

Dimensions



Order codes

Code	D max (no iron)	D max (on iron)	Connection type	Max voltage	Max current	Max power	N° wires	Cable length	Safety grade	Environmental class	Package weight	Notes
403-AG	22 mm	10 mm	NC*	42.4 V _{peak} - 60 V _{DC}	1 A	10 W	4	1.2 m	2	III	0.55 Kg	sheathed cable

"Safety grade" and "Environmental Class" as per European Standard EN 50131-1

D max: maximum installation distance. For other operating distances, see the instructions sheet at www.coopercsa.it

* With near magnet