

1.3

Flush-mounting magnetic contacts

Series 415

1



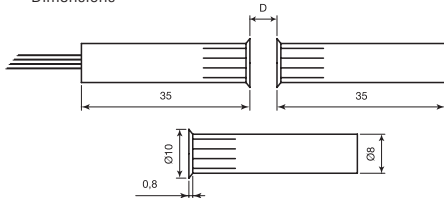
EN50131-2-6 GR2 CL III

- Complies with EN50131-2-6
- Flush-mounting
- Wide operating distance
- Suitable for aluminium, wood and PVC doors and windows
- With anti-tampering wire loop
- Colours - White and brown

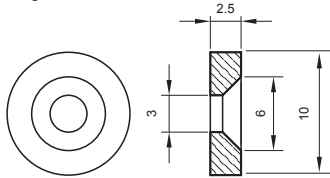
Series 415

Housing material	Thermoplastic in colours as per table
Operation	Reed contact with NC output with near magnet or changeover reed contact
Type of connection	Wires (2 for contact - 3 for changeover contact + 2 for anti-tampering)
Operating temperature	-10°C to +40°C
Protection rating	IP 65
Standard equipment	Anti-tampering wires

Dimensions



Magnet 300-MA dimensions



Order codes

Code	D max (no iron)	Connection type	Max voltage	Max current	Max power	N° wires	Cable length	Colour	Other certifications	Safety grade	Environmental class	Package weight	Notes
415-TF	15 mm	NC*	42.4 V _{peak} - 60 V DC	1 A	10 W	4	0.3 m	white	Vds G191596 cl.B	2	II	0.11 Kg	
415-TF-2	15 mm	NC*	42.4 V _{peak} - 60 V DC	1 A	10 W	4	2.0 m	white	-	2	II	0.50 Kg	sheathed cable
415-TF-M	15 mm	NC*	42.4 V _{peak} - 60 V DC	1 A	10 W	4	0.3 m	brown	-	2	II	0.11 Kg	
415-TF-2-M	15 mm	NC*	42.4 V _{peak} - 60 V DC	1 A	10 W	4	2.0 m	brown	-	2	II	0.50 Kg	sheathed cable
415-STF	9 mm	changeover	42.4 V _{peak} - 60 V DC	300 mA	3 W	5	0.3 m	white	-	2	II	0.11 Kg	

"Safety grade" and "Environmental Class" as per European Standard EN 50131-1

D max: maximum installation distance. For other operating distances, see the instructions sheet at www.coopercsa.it

* With near magnet

Accessories

300-MA	Flat magnet
--------	-------------

Series 415

Thermoplastic cylindrical magnetic contact

Thermoplastic magnetic contact for flush mounting on doors and windows frames. Suitable to be mounted on aluminium, wood and PVC doors and windows, and in general, on all non-ferromagnetic material (iron frames will significantly reduce operating distance).

The wide operating distance allows installation on frames having large tolerances or clearances. It is mounted with pressure on the frame into an 8 mm diameter hole.

The reed section contains a tightly sealed reed with polyurethane resin and anti-tampering loop to reduce any risk of intrusion.

Available versions include NC contact, NC-NO (changeover) contact, and different cable lengths.

Connection uses 4 wires (2 wires for NC contact with near magnet and 2 wires for anti-tampering) or 5 wires (415-STF model) with changeover reed (3 wires for reed contacts + 2 wires for anti-tampering). Available in white and brown.