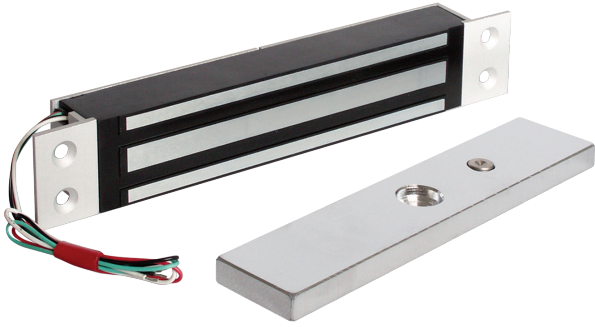


# 1.14 Electromagnetic door holders

1385

1



- Holding force 300 Kg
- Counter plate included
- 12-24 V DC selectable
- IP 40 version

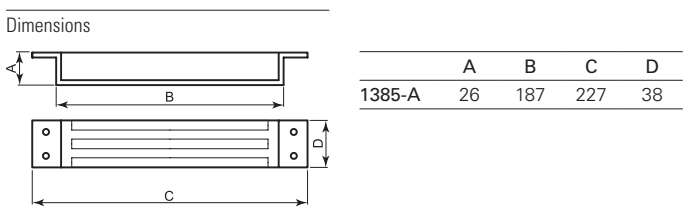
## 1385 Flush mounting electromagnetic door holder

Flush mounting electromagnetic door holder to block emergency, anti-panic, access and passage doors.

The high holding force allows to keep doors closed under normal condition. In case of emergency, the electromagnet unit is released, allowing door opening. Fail safe operation: the door is released in case of power drop, enabling the safe passage of people. 12 or 24 V DC power supply, selectable with internal jumper.

Thanks to wide range of auxiliary brackets, they can be mounted in several applications including glazed doors. These door holder units can be released by emergency buttons or specific control panels.

1385	
Body material	Anodized aluminium
Magnetic part material	Stainless steel
Operation	Release without power supply
Type of connection	Wire
Operating temperature	-10°C to +55°C
Standard equipment	Galvanized steel counter plate, screws and mounting accessories



### Order codes

Code	Holding force ±15 %	Nominal voltage	Nominal current	Door status	Mounting	Degree of protection	Package weight	Notes
1385-A	300 Kg / 2490 N	12-24 V DC	500 mA @ 12 V DC 250 mA @ 24 V DC	yes	flush mounting	IP 40	1.82 Kg	Damping counter plate