



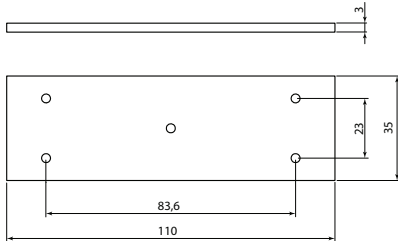
### 1000-SPC

Pcs./package: 10  
 Weight: 0.06 Kg  
 Applicability: Series 1000, 1000-TST

### Spacer for 1000 & 1000-TST series

It is mounted under the reed of series 1000 so as to be aligned with the corresponding magnetic part  
 Made of grey thermoplastic material

#### Dimensions



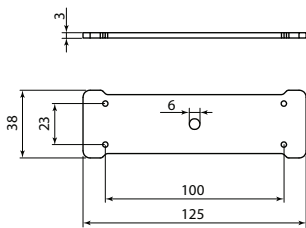
### 1000-N-SPC

Pcs./package: 10  
 Weight: 0.06 Kg  
 Applicability: Series 1000-N, 1000-N-TST

### Spacer for 1000-N & 1000-N-TSTseries

It is mounted under the reed of series 1000-N so as to be aligned with the corresponding magnetic part  
 Made of grey thermoplastic material

#### Dimensions



### 1200-SPC

Pcs./package: 10  
 Weight: 0.06 Kg  
 Applicability: Series 1200, 1200-TST

### Spacer for 1200 & 1200-TST series

It is mounted under the reed of series 1200 so as to be aligned with the corresponding magnetic part  
 Made of grey thermoplastic material

#### Dimensions

