

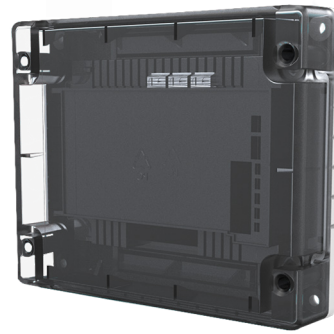


CHQ-DRC2(SCI)/SIL

Analogue Dual Relay Controller with SCI

Features

- ▶ Loop powered, with single loop address
- ▶ Loop Powered
- ▶ 2 Independently controlled changeover relays
- ▶ Relays contact rated at 30 VDC at 1 A
- ▶ Auxiliary monitored input
- ▶ DIN-Rail version available
- ▶ Both models feature an integral short-circuit isolator
- ▶ Both models approved by LPCB
- ▶ Approved to SIL2



Description

Model CHQ-DRC2(SCI)/SIL is a Dual Relay Controller designed to provide two general-purpose relay outputs, each output can be driven separately for control of such devices as dampers or for control of plant and equipment shutdown. The monitored input can be used for local power supply fault monitoring or as a general-purpose input.

The unit is also available as a DIN Rail mountable version; both models feature an integral short-circuit isolator. The CHQ-DRC2(SCI)/SIL utilises simple DIL switches for reliable addressing. A back box is also available (CHQ-BACKBOX) which, when used in conjunction with the CHQ-DRC2(SCI)/SIL, increases the IP rating to IP65.

Specification

Operating Voltage	17 ~ 41 VDC		
Low Power Mode (0.75s)	170 μ A		
Quiescent Current	300 μ A		
Current Consumption	22 mA \pm 20 % (polling)		
Current in Short-Circuit	8 mA		
Maximum Short-Circuit Current	1 A (loop)		
Relay Contact Rating	30 VDC max, 1 A (resistive load)		
Input E.O.L. Resistor	10 k Ω , \pm 5%, 0.25 W		
Input Threshold Level	ON=470 Ω , Short cct <50 Ω , Open cct >100 k Ω		
Operating Temperature Range	-10 $^{\circ}$ C to +50 $^{\circ}$ C		
Storage Temperature Range	-30 $^{\circ}$ C to +60 $^{\circ}$ C		
Maximum Humidity	95%RH Non Condensing (at 40 $^{\circ}$ C)		
Weights (g) & Dimensions (mm)	Module Enclosure	343	L=157 x W=127 x D=35 (Module & Lid) D=79 (Module, Lid & CHQ-BACKBOX) (add 235 to module weight when using CHQ-BACKBOX)
	DIN Enclosure	124	L=119 x W=108 x D=24
Colour and enclosure material	CHQ Module & CHQ-BACKBOX White ABS, DIN Module Green ABS, Module Lid Semi-Opaque Black ABS as standard (white version – CHQ-LID(WHT) also available)		

Ordering Codes

Product

Analogue Dual Relay Controller Module with SCI

Part Number

CHQ-DRC2(SCI)/SIL



For further information visit www.hochikieurope.com/silapproved

Hochiki Europe (UK) Ltd. Reserves the right to alter the specification of its products from time to time without notice. Although every effort has been made to ensure the accuracy of the information contained in this document it is not warranted or represented by Hochiki Europe (UK) Ltd. To be a complete and up-to-date description.